

TENERIFE NEXT KC

WALL-HUNG CONDENSING BOILER WITH INSTANTANEOUS PRODUCTION OF DHW







Available in the following models:

24

28

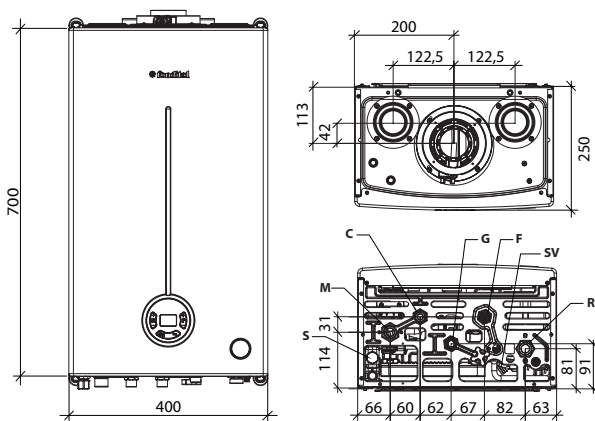
- ▶ **SMART COMBUSTION:** Self-calibrating system that automatically adapts to gas mixture, ensuring consistently optimal performance over time.
- ▶ **MODULATION (1:8):** Perfectly matches actual demand, reducing energy consumption and ignition cycles.
- ▶ **HIGH-EFFICIENCY STAINLESS STEEL HEAT EXCHANGER:** Single-coil design with large bore for long-term reliability and consistent performance.
- ▶ **CERAMIC QUALITY:** High-performance ceramic burner enabling a wider modulation range.
- ▶ **9-LITRE EXPANSION VESSEL:** Greater system capacity, reducing the need for external accessories.
- ▶ **ULTRA COMPACT DESIGN** Only 250 mm deep: ideal even for confined spaces.
- ▶ **HYDROGEN READY:** Compatible with natural gas-hydrogen blends up to 20% H₂, ready for future requirements.
-) **EASY GAS CONVERSION:** Switch gas type via electronic parameter only — no conversion kits required.
-) **AUTO-AIR-PURGE:** Automatic air venting cycle at start-up for faster, hassle-free installation.
-) **ADAPTIVE BOOST:** Fan control algorithm with dynamic pressure increase (parameter-activated); compatible with Ø50 and Ø60 flue, ideal for long distance exhaust and complex installations.
-) **EASY INSYTALLATION:** Simple and practical mounting and maintenance.
-) **LCD DISPLAY:** Backlit display with integrated diagnostics for immediate system monitoring.
-) **ADVANCED CONFIGURATION:** Programmable parameters for system customization and error history tracking.

Model	Gas type	Code	Heat input		Energy efficiency class		W x H x D mm	Gross weight kg
			Nominal (Q _n) kW	Nominal DHW kW	Room heating	Heating DHW		
KC 24	NATURAL GAS	KTGX2KC24	20,0	24,0		 XL	400x700x250	27,5
KC 28	NATURAL GAS	KTGX2KC28	24,0	28,0		 XL	400x700x250	30,0

Included in the price: Paper installation template, aspiration closing plugs and wall-mount bracket.

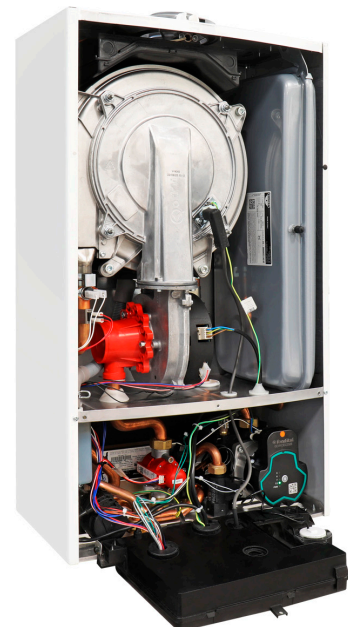
Available from September 2026, subject to market availability.

DIMENSIONS AND CONNECTION CENTRE DISTANCES



S Condensate drain
M CH system flow (3/4")
C DHW outlet (1.2")

G Gas inlet (1/2")
F Cold water inlet (1/2")
R CH system return (3/4")



Technical data	um	KC 24	KC 28
Rated output (Pn)	kW	19	23
Seasonal energy efficiency of ambient heating (η_s)	%	92	93
Water heating energy efficiency (η_{wh})	%	88	82
Nominal heat input (Qn)	kW	20,0	24,0
Nominal heat output (80-60°C) (Pn)	kW	19,5	23,4
Heat output (50-30°C)	kW	21,3	25,9
Reduced heat input (Qr)	kW	3,0	3,5
Useful efficiency at nominal input (80-60°C)	%	97,3	97,5
Useful efficiency at nominal input (50-30°C)	%	106,5	107,7
Useful efficiency at 30% (30°C return)	%	107,3	109,7
Heating expansion vessel capacity	l	9	9
DHW nominal heat input	kW	24,0	28,0
Specific DHW flow $\Delta T=30K$	l/min	12,3	13,4
NOx emission class	-	6	6
Electric protection rating	IP	IPX4D	IPX4D

Item	Description	Code	Item	Description	Code
	Remote control Ready Remote	0CREMOTO08		Coax. adapter kit D.60/100 to D.80/125	0KITADCO00
	Spot Easy WI-FI Thermostat (Available from June 2026)	0SPOTAPP20		Splitter kit Ø80+80	0KITSDOP08
	Multi-zone radio relay for pairing with Spot Easy thermostat (Available from June 2026)	0RELERAD01		External probe (60x45x31 mm)	0SONDAES01
	Ø60/100 coaxial kit in painted steel, length 75 cm	0CONDASP00		Magnetic dirt separator filter	0AFILDEF00
	Coaxial fitting kit Ø60/100	0KITATCO00		Compact wall pipe cover - Height 110 mm - Width 400 mm - Depth (upper part) 194 mm - Depth (lower part) 165 mm	0COPETUB00

NB: Per maggiori informazioni vai sul nostro sito www.fondital.com

How to increase energy efficiency?

Discover the most suitable solution

Seasonal energy efficiency of ambient heating (η_s)				
Regulation device		Code	KC 24	KC 28
Option 1	Boiler + external probe	0SONDAES01	94%	95%
Option 2	Boiler + remote control	0CREMOTO08	95%	96%
Option 3	Boiler+ remote control + external probe	0CREMOTO08	96%	97%
		0SONDAES01		